



# **WEST LAKE** **TIRES**®

**PRODUCT CATALOG**

# PRODUCT CATALOG



## DISCLAIMER

The content of this catalog is for informational use only. Tireco, Inc. is not liable for any typographical errors or misprints.



## CONTENTS

<b>RP18 RADIAL</b>	<b>02</b>
<b>SA07 SPORT</b>	<b>04</b>
<b>SU318 RADIAL H/T</b>	<b>08</b>
<b>SL309 RADIAL A/P</b>	<b>12</b>
<b>SL369 RADIAL A/T</b>	<b>14</b>
<b>SL376 RADIAL M/T</b>	<b>16</b>

# RP18 RADIAL

TOURING · PASSENGER CAR

The **RP18** touring line is engineered for year-round performance and provides unmatched value in its category. Utilizing an all-season touring tread design with four circumferential grooves fused with a multitude of lateral siping for optimized wet traction, steering response, and handling. The symmetric tread design also allows for tire rotations which supports prolonged tread wear.

**45K**  
MILE WARRANTY

**T · H · V**  
SPEED RATING

**500AA**  
UTQG



[CLICK HERE TO DOWNLOAD CUTSHEET](#)

## ENHANCED FEATURES



**REDUCED NOISE**



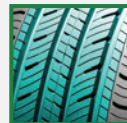
**WET TRACTION**



**ALL-SEASON**



**MINIMIZED ROAD NOISE AND MAXIMIZED COMFORT**  
Variable pitch tread pattern reduces road noise and provides a comfortable ride.



**EVEN TREAD WEAR AND TRACTION**  
Optimized grooves and siping patterns enhance contact patch for improved tread wear and traction.



**ALL-SEASON CAPABILITIES**  
Angled grooves and siping improves grip for better footing in all seasons.



**IMPROVED WET GRIP AND STABILITY**  
Four circumferential grooves enhance wet road stability while evacuating water for better grip.



**RP18 RADIAL**  
TOURING  
PASSENGER CAR



Wheel Diameter	Size	Item Number	Service Index	Sidewall	LR/PR	Tread Depth	Rim Width (Measured)	Rim Width (Approved)	Section Width	Overall Diameter	Max Load	Approximate Weight	UTQG
13"	155/80R13	24160017	79T	BW	SL	9/32	4.50	4.00 - 5.00	6.2	22.8	963@44	13.5	500AA
	175/70R13	24216026	82T	BW	SL	9/32	5.00	4.50 - 6.00	7.0	22.7	1047@44	14.4	500AA
	185/70R13	24221016	86T	BW	SL	10/32	5.50	4.50 - 6.00	7.4	23.2	1168@44	15.5	500AA
14"	175/65R14	24510034	82H	BW	SL	9/32	5.00	5.00 - 6.00	7.0	23.0	1047@44	15.1	500AA
	175/70R14	24218015	84T	BW	SL	9/32	5.00	4.50 - 6.00	7.0	23.7	1102@44	15.6	500AA
	185/60R14	24615031	82H	BW	SL	9/32	5.50	5.00 - 6.50	7.4	22.8	1036@44	15.5	500AA
	185/65R14	24515033	86H	BW	SL	9/32	5.50	5.00 - 6.50	7.4	23.5	1168@44	15.8	500AA
	185/70R14	24235025	88T	BW	SL	10/32	5.50	4.50 - 6.00	7.4	24.3	1235@44	16.5	500AA
	195/60R14	24620023	86H	BW	SL	10/32	6.00	5.50 - 7.00	7.9	23.2	1168@44	17.0	500AA
	195/70R14	24275024	91T	BW	SL	10/32	6.00	5.00 - 6.50	7.9	24.8	1356@44	18.3	500AA
	205/70R14	24228018	95T	BW	SL	10/32	6.00	5.00 - 7.00	8.2	25.4	1521@44	19.8	500AA
15"	175/65R15	24511006	84H	BW	SL	9/32	5.00	5.00 - 6.00	7.0	24.0	1102@44	15.9	500AA
	▶185/55R15	24250010	82V	BW	SL	9/32	6.00	5.00 - 6.50	7.6	23.0	1047@44	16.9	500AA
	185/60R15	24616008	84H	BW	SL	9/32	5.50	5.00 - 6.50	7.4	23.7	1102@44	16.2	500AA
	185/65R15	24525034	88H	BW	SL	9/32	5.50	5.00 - 6.50	7.4	24.4	1235@44	17.1	500AA
	▶195/50R15	24335024	82V	BW	SL	10/32	6.00	5.50 - 7.00	7.9	22.7	1047@44	17.6	500AA
	▶195/55R15	24435020	85V	BW	SL	10/32	6.00	5.50 - 7.00	7.9	23.4	1135@44	17.9	500AA
	195/60R15	24635033	88H	BW	SL	10/32	6.00	5.50 - 7.00	7.9	24.2	1235@44	17.9	500AA
	195/65R15	24530041	91H	BW	SL	10/32	6.00	5.50 - 7.00	7.9	25.0	1356@44	18.8	500AA
	205/60R15	24640031	91H	BW	SL	10/32	6.00	5.50 - 7.50	8.2	24.7	1356@44	22.2	500AA
	205/65R15	24540038	94H	BW	SL	10/32	6.00	5.50 - 7.50	8.2	25.5	1477@44	20.1	500AA
	205/70R15	24240014	96H	BW	SL	10/32	6.00	5.00 - 7.00	8.2	26.3	1565@44	21.9	500AA
	215/60R15	24645023	94H	BW	SL	10/32	6.50	6.00 - 7.50	8.7	25.2	1477@44	21.5	500AA
	215/65R15	24545025	96H	BW	SL	10/32	6.50	6.00 - 7.50	8.7	26.0	1565@44	24.2	500AA
	215/70R15	24245012	98H	BW	SL	10/32	6.50	5.50 - 7.00	8.7	26.9	1653@44	23.0	500AA
	16"	▶185/55R16	24426002	83V	BW	SL	9/32	6.00	5.00 - 6.50	7.4	23.9	1074@44	18.0
▶195/50R16		24355011	84V	BW	SL	10/32	6.00	5.50 - 7.00	7.9	24.4	1102@44	18.1	500AA
▶195/55R16		24437009	87V	BW	SL	10/32	6.00	5.50 - 7.00	7.9	24.4	1201@44	18.8	500AA
▶205/50R16		24360014	87V	BW	SL	10/32	6.50	5.50 - 7.50	8.4	24.1	1202@44	19.0	500AA
▶205/55R16		24460035	91V	BW	SL	10/32	6.50	5.50 - 7.50	8.4	24.9	1356@44	20.1	500AA
205/60R16		24653020	92H	BW	SL	10/32	6.00	5.50 - 7.50	8.2	25.7	1389@44	20.1	500AA
205/65R16		24555005	95H	BW	SL	10/32	6.00	5.50 - 7.50	8.2	26.5	1521@44	22.5	500AA
215/60R16		24655023	95H	BW	SL	10/32	6.50	6.00 - 7.50	8.7	26.1	1521@44	22.6	500AA
215/65R16		24560018	98H	BW	SL	10/32	6.50	6.00 - 7.50	8.7	27.0	1653@44	23.9	500AA
225/60R16		24665028	98H	BW	SL	10/32	6.50	6.00 - 8.00	9.0	26.6	1653@44	23.4	500AA
225/65R16		24666004	100H	BW	SL	10/32	6.50	6.00 - 8.00	9.0	27.5	1764@44	25.5	500AA
235/60R16		24675016	100H	BW	SL	10/32	7.00	6.50 - 8.50	9.4	27.1	1764@44	25.5	500AA
235/65R16	24676001	103H	BW	SL	10/32	7.00	6.50 - 8.50	9.4	28.0	1929@44	27.1	500AA	

▶ Features rim protector

Product images shown are for illustrative purposes only. Technical features, tread pattern design and tire construction subject to change without notice and can vary by size and application.

# SA07 SPORT

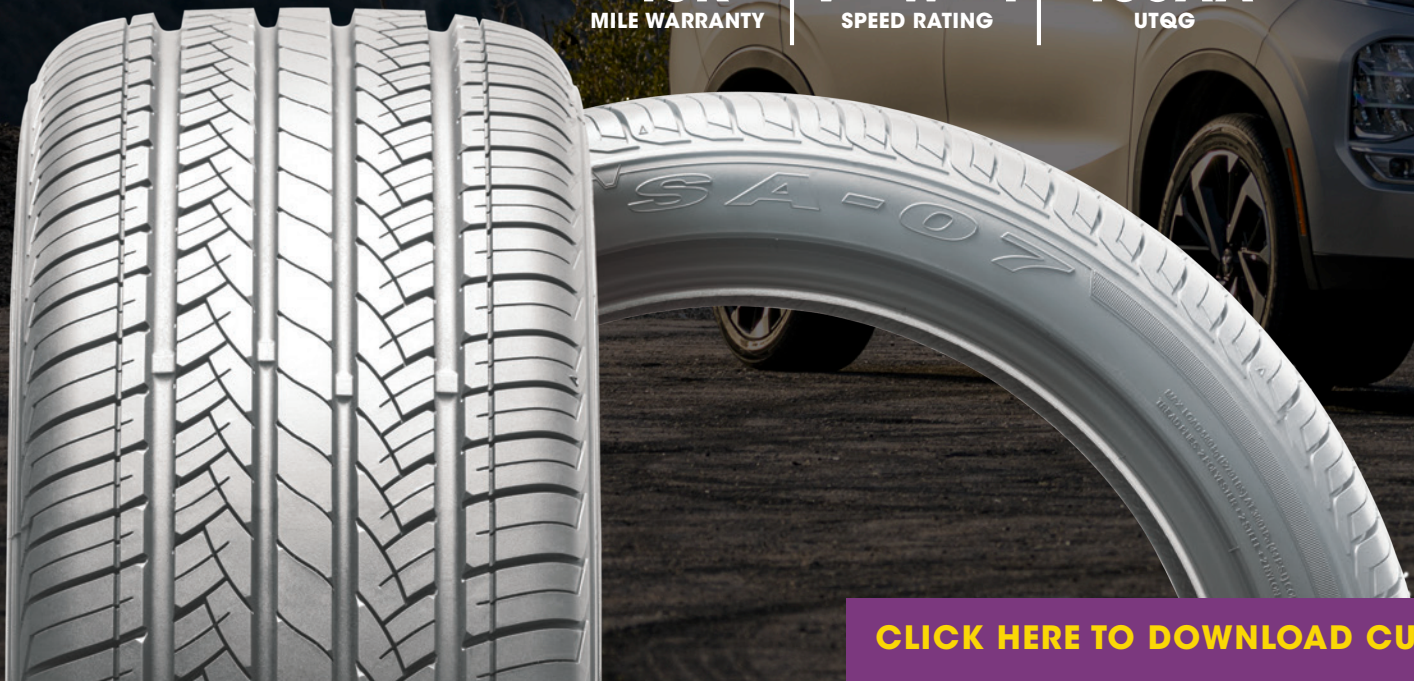
PERFORMANCE TOURING · PASSENGER CAR

Developed for today's sports-minded cars and CUV's, the SA07 Performance Touring tire is an all-season high performer ready to enhance your driving experience. It has four wide circumferential grooves and tread blocks with cross siping to improve wet traction and promote even treadwear. The center rib provides a contact patch to promote stability and responsive handling for improved traction and cornering.

**45K**  
MILE WARRANTY

**V · W · Y**  
SPEED RATING

**460AA**  
UTQG



[CLICK HERE TO DOWNLOAD CUTSHEET](#)

## ENHANCED FEATURES



REDUCED NOISE



WET TRACTION



ALL-SEASON



### IMPROVED TREAD LIFE

Symmetric all-season tread designs simplify tire rotation options for better wear and tread life.



### ENHANCED CONTROL AND STABILITY

Rigid, minimally siped, center rib enhances lateral stability and control through continuous tire-to-road contact.



### INCREASED GRIP AND TRACTION

Cross-grain siping pattern increases traction by creating extra surface area for enhanced grip.



### OPTIMIZED WET TRACTION

Four circumferential grooves optimize water evacuation for enhanced wet traction.



**SA07 SPORT**  
**PERFORMANCE TOURING**  
**PASSENGER CAR**



Wheel Diameter	Size	Item Number	Service Index	Sidewall	LR/PR	Tread Depth	Rim Width (Measured)	Rim Width (Approved)	Section Width	Overall Diameter	Max Load	Approximate Weight	UTQG
16"	195/45R16	24336004	84V	BW	XL	10/32	6.50	6.00 - 7.50	8.0	22.8	1102@51	17.7	460AA
	215/55R16	24556014	93V	BW	SL	11/32	7.00	6.00 - 7.50	8.9	25.3	1433@44	23.2	460AA
	225/50R16	24365010	92W	BW	SL	10/32	7.00	6.00 - 8.00	9.2	24.9	1389@44	21.0	460AA
	225/55R16	24465014	95W	BW	SL	11/32	7.00	6.00 - 8.00	9.2	25.7	1521@44	24.3	460AA
17"	205/40ZR17	24870021	84W	BW	XL	10/32	7.50	7.00 - 8.00	8.3	23.5	1102@51	18.8	460AA
	205/45ZR17	24947006	88W	BW	XL	10/32	7.50	6.50 - 7.50	8.5	24.1	1235@51	20.7	460AA
	205/50R17	24385008	89W	BW	SL	10/32	6.50	5.50 - 7.50	8.4	25.1	1279@44	22.2	460AA
	215/40ZR17	24875015	87W	BW	XL	10/32	7.50	7.00 - 8.50	8.6	23.8	1102@51	20.6	460AA
	215/45ZR17	24975012	91W	BW	XL	10/32	7.00	7.00 - 8.00	8.4	24.6	1356@51	21.8	460AA
	215/50R17	24390012	91W	BW	SL	10/32	7.00	6.00 - 7.50	8.9	25.5	1356@44	23.2	460AA
	215/55R17	24470011	94V	BW	SL	11/32	7.00	6.00 - 7.50	8.9	26.3	1477@44	24.4	460AA
	225/45ZR17	24977021	94W	BW	XL	10/32	7.50	7.00 - 8.50	8.9	25.0	1477@51	22.6	460AA
	225/50R17	24395010	94W	BW	SL	11/32	7.00	6.00 - 8.00	9.2	25.9	1477@44	25.9	460AA
	225/55R17	24475012	97W	BW	SL	10/32	7.00	6.00 - 8.00	9.2	26.8	1609@44	25.3	460AA
	235/45ZR17	24980014	97W	BW	XL	10/32	8.00	7.50 - 9.00	9.3	25.4	1609@51	24.2	460AA
	235/50R17	24400006	100W	BW	XL	10/32	8.50	6.50 - 8.50	10.1	26.1	1764@51	28.2	460AA
	235/55R17	24480005	99W	BW	SL	10/32	7.50	6.50 - 8.50	9.6	27.2	1709@44	28.2	460AA
	245/40ZR17	24081001	95W	BW	XL	10/32	8.50	8.00 - 9.50	9.8	24.7	1521@51	24.9	460AA
	245/45ZR17	24982009	95Y	BW	SL	10/32	8.00	7.50 - 9.00	9.6	25.7	1521@44	26.3	460AA
	245/50R17	24375502	99V	BW	SL	10/32	7.50	7.00 - 8.50	10.0	26.7	1709@44	27.1	460AA
255/40ZR17	24885009	94Y	BW	SL	10/32	9.00	8.50 - 10.00	10.2	25.0	1477@44	23.8	460AA	
255/45ZR17	24985003	98W	BW	SL	10/32	8.50	8.00 - 9.50	10.0	26.1	1653@44	27.8	460AA	
18"	215/35ZR18	24030010	84W	BW	XL	10/32	7.50	7.00 - 8.50	8.6	23.9	1100@51	22.1	460AA
	215/40ZR18	24888005	89W	BW	XL	10/32	7.50	7.00 - 8.50	8.8	24.6	1279@51	21.2	460AA
	215/45ZR18	24970003	89W	BW	SL	10/32	7.00	7.00 - 8.00	8.4	25.6	1279@44	24.7	460AA
	215/55R18	24495002	99V	BW	XL	10/32	7.00	6.00 - 7.50	8.9	27.3	1709@51	23.8	460AA
	225/35ZR18	24050007	87Y	BW	XL	10/32	8.00	7.50 - 9.00	10.0	25.0	1202@42	22.2	460AA
	225/40ZR18	24077016	92W	BW	XL	10/32	8.00	7.50 - 9.00	9.1	25.1	1389@51	23.2	460AA
	225/45ZR18	24990007	95W	BW	XL	10/32	7.50	7.00 - 8.50	8.9	25.9	1521@51	23.7	460AA
	225/50R18	24558005	95V	BW	SL	10/32	7.00	6.00 - 8.00	9.2	26.9	1521@44	24.4	460AA
	225/55R18	24559006	98V	BW	SL	10/32	7.00	6.00 - 8.00	9.2	27.8	1653@44	25.2	460AA
	235/40ZR18	24080022	95W	BW	XL	10/32	8.50	8.00 - 9.50	9.5	25.4	1521@51	24.0	460AA
	235/45ZR18	24998002	94Y	BW	SL	10/32	8.00	7.50 - 9.00	9.3	26.3	1477@44	25.4	460AA
	235/50R18	24410005	101W	BW	XL	10/32	7.50	6.50 - 8.50	9.6	27.3	1819@51	30.3	460AA
	245/35ZR18	24055005	92Y	BW	XL	10/32	8.50	8.00 - 9.50	9.8	24.8	1389@51	23.8	460AA
	245/40ZR18	24082011	97Y	BW	XL	10/32	8.50	8.00 - 9.50	9.8	25.7	1609@51	26.9	460AA
	245/45ZR18	24995009	96Y	BW	SL	10/32	8.00	7.50 - 9.00	9.6	26.7	1565@44	28.0	460AA
	245/50R18	24375004	100Y	BW	SL	10/32	7.50	7.00 - 8.50	10.0	27.7	1764@44	29.8	460AA
	245/55R18	24374502	103W	BW	SL	10/32	7.50	7.00 - 8.50	10.0	28.6	1929@44	30.1	460AA
	255/35ZR18	24045013	94Y	BW	XL	10/32	9.00	8.50 - 10.00	10.2	25.0	1477@42	24.5	460AA
255/40ZR18	24848006	99Y	BW	XL	10/32	9.00	8.50 - 10.00	10.2	26.0	1709@51	25.0	460AA	
265/35ZR18	24051015	97Y	BW	XL	10/32	9.50	9.00 - 10.50	10.7	25.3	1609@51	24.8	460AA	
275/35ZR18	24053005	99Y	BW	XL	10/32	9.50	9.00 - 11.00	10.7	25.5	1709@42	28.9	460AA	
19"	225/35ZR19	24034008	88Y	BW	XL	10/32	8.00	7.50 - 9.00	9.1	25.2	1235@51	23.1	460AA
	225/40ZR19	24078003	93W	BW	XL	10/32	8.50	7.50 - 9.00	9.3	25.9	1433@51	23.9	460AA
	225/45ZR19	24853002	96Y	BW	XL	10/32	7.50	7.00 - 8.50	8.9	27.0	1565@51	23.7	460AA
	235/35ZR19	24052009	91W	BW	XL	10/32	8.50	8.00 - 9.50	9.5	25.5	1356@51	25.0	460AA
	235/40ZR19	24851003	96W	BW	XL	10/32	8.50	8.00 - 9.50	9.5	26.4	1565@51	24.6	460AA
	245/35ZR19	24054007	93Y	BW	XL	10/32	8.50	8.00 - 9.50	9.8	25.8	1433@51	24.7	460AA
	245/40ZR19	24083007	94Y	BW	SL	10/32	8.50	8.00 - 9.50	9.8	26.7	1477@44	29.3	460AA
	245/45R19	24996008	98V	BW	SL	10/32	8.00	7.50 - 9.00	9.6	27.7	1653@44	28.0	460AA
	245/50R19	24864001	105W	BW	XL	10/32	7.50	7.00 - 8.50	10.0	28.7	2039@51	29.9	460AA
255/35ZR19	24049004	96W	BW	XL	10/32	9.00	8.50 - 10.00	10.2	26.0	1565@51	27.4	460AA	

Continued on next page...

Product images shown are for illustrative purposes only. Technical features, tread pattern design and tire construction subject to change without notice and can vary by size and application.

# SA07 SPORT

PERFORMANCE TOURING · PASSENGER CAR

Developed for today's sports-minded cars and CUV's, the SA07 Performance Touring tire is an all-season high performer ready to enhance your driving experience. It has four wide circumferential grooves and tread blocks with cross siping to improve wet traction and promote even treadwear. The center rib provides a contact patch to promote stability and responsive handling for improved traction and cornering.

**45K**  
MILE WARRANTY

**V · W · Y**  
SPEED RATING

**460AA**  
UTQG



[CLICK HERE TO DOWNLOAD CUTSHEET](#)

## ENHANCED FEATURES



REDUCED NOISE



WET TRACTION



ALL-SEASON



### IMPROVED TREAD LIFE

Symmetric all-season tread designs simplify tire rotation options for better wear and tread life.



### ENHANCED CONTROL AND STABILITY

Rigid, minimally siped, center rib enhances lateral stability and control through continuous tire-to-road contact.



### INCREASED GRIP AND TRACTION

Cross-grain siping pattern increases traction by creating extra surface area for enhanced grip.



### OPTIMIZED WET TRACTION

Four circumferential grooves optimize water evacuation for enhanced wet traction.





**SA07 SPORT**  
**PERFORMANCE TOURING**  
**PASSENGER CAR**



SIZES CONTINUED...

Wheel Diameter	Size	Item Number	Service Index	Sidewall	LR/PR	Tread Depth	Rim Width (Measured)	Rim Width (Approved)	Section Width	Overall Diameter	Max Load	Approximate Weight	UTQG
<b>19"</b>	255/40ZR19	24848002	100W	BW	XL	10/32	9.00	8.50 - 10.00	10.2	27.0	1764@51	30.1	460AA
	255/45R19	24985501	100V	BW	SL	10/32	8.50	8.00 - 9.50	10.0	28.1	1764@44	30.0	460AA
	265/35ZR19	24026504	98Y	BW	XL	10/32	9.50	9.00 - 10.50	10.7	26.3	1653@51	26.1	460AA
	275/35ZR19	24062005	100Y	BW	XL	10/32	9.50	9.00 - 11.00	10.9	26.6	1764@51	29.1	460AA
	275/40R19	24736007	101W	BW	SL	10/32	9.50	9.00 - 11.00	11.2	27.5	1819@44	30.3	460AA
<b>20"</b>	225/35ZR20	24058010	90Y	BW	XL	10/32	8.00	7.50 - 9.00	9.1	26.2	1323@51	24.2	460AA
	◆235/35ZR20	24352007	92Y	BW	XL	10/32	8.50	8.00 - 9.50	9.5	26.5	1389@51	24.9	460AA
	245/30ZR20	24532006	90Y	BW	XL	10/32	8.50	8.00 - 9.00	9.8	25.8	1323@51	25.7	460AA
	245/35ZR20	24060006	95W	BW	XL	10/32	8.50	8.00 - 9.50	9.8	26.8	1521@51	28.7	460AA
	245/40ZR20	24085004	99W	BW	XL	10/32	8.50	8.00 - 9.50	9.8	27.7	1709@51	28.4	460AA
	245/45ZR20	24087006	99W	BW	SL	10/32	8.00	8.00 - 9.50	9.6	28.7	1709@44	30.0	460AA
	255/30ZR20	24057009	92Y	BW	XL	10/32	9.00	8.50 - 9.50	10.2	26.1	1389@51	26.7	460AA
	255/35ZR20	24065011	97Y	BW	SL	10/32	9.00	8.50 - 10.00	10.0	27.0	1609@51	26.4	460AA
	255/40ZR20	24123400	101Y	BW	XL	10/32	9.00	8.50 - 10.00	10.2	27.9	1819@42	30.3	460AA
	255/45ZR20	24984007	105W	BW	XL	10/32	8.50	8.00 - 9.50	10.0	29.1	2039@51	31.4	460AA
	265/35ZR20	24079100	99Y	BW	XL	10/32	9.50	9.00 - 10.50	10.7	27.3	1709@51	29.3	460AA
	265/50R20	24652003	111V	BW	XL	10/32	8.50	7.50 - 9.50	10.9	30.5	2403@51	35.7	460AA
	275/30ZR20	24059006	97Y	BW	XL	10/32	9.50	9.00 - 10.00	10.9	26.5	1611@51	28.6	460AA
	275/35ZR20	24735005	102Y	BW	XL	10/32	9.50	9.00 - 11.00	10.9	27.6	1874@51	30.4	460AA
	275/40ZR20	24084009	106W	BW	XL	10/32	9.50	9.00 - 11.00	10.9	28.7	2094@51	31.8	460AA
	285/30ZR20	24061005	99Y	BW	XL	10/32	10.00	9.50 - 10.50	11.2	26.8	1709@42	30.9	460AA
	285/35ZR20	24031002	100Y	BW	SL	10/32	10.00	9.50 - 11.00	11.4	27.9	1764@44	31.4	460AA
305/35ZR20	24501001	104Y	BW	SL	10/32	11.00	10.00 - 12.00	12.3	28.4	1984@44	34.1	460AA	
<b>22"</b>	235/30ZR22	24051016	90W	BW	XL	10/32	8.50	8.50 - 8.50	9.5	27.6	1323@51	26.8	460AA
	245/30ZR22	24028006	92W	BW	XL	10/32	8.50	8.00 - 9.00	9.8	27.8	1389@51	27.7	460AA
	255/30ZR22	24057010	95W	BW	XL	10/32	9.00	8.50 - 9.50	10.2	28.1	1521@51	29.0	460AA
	265/35ZR22	24072004	102W	BW	XL	10/32	9.50	9.00 - 10.50	10.7	29.3	1874@51	31.4	460AA
	265/40ZR22	24022005	106W	BW	XL	10/32	9.50	9.00 - 10.50	10.7	30.4	2094@51	33.6	460AA
295/30ZR22	24076002	103W	BW	XL	10/32	10.50	10.00 - 11.00	11.9	29.0	1931@42	34.7	460AA	

◆ No rim protector

Product images shown are for illustrative purposes only. Technical features, tread pattern design and tire construction subject to change without notice and can vary by size and application.

# SU318 RADIAL H/T

CUV / SUV TOURING · CUV / SUV

Developed for everyday comfort and styling for your CUV and SUV, the **SU318** has a smooth and responsive ride. The innovative M+S design promotes excellent all-season traction, with lateral siping and four circumferential grooves promoting water evacuation to provide excellent grip and handling for confident, year-long performance.

**50K**  
MILE WARRANTY

**T · H · V**  
SPEED RATING

**500AA**  
UTQG

[CLICK HERE TO DOWNLOAD CUTSHEET](#)

## ENHANCED FEATURES



**REDUCED NOISE**



**WET TRACTION**



**ALL-SEASON**



### **QUIET AND COMFORTABLE RIDE**

Advanced CAD-designed block and siping pattern minimize road noise.



### **ENHANCED CORNERING AND HANDLING**

Angled shoulder blocks improve grip and directional stability for optimal cornering and handling capabilities.



### **OPTIMIZED TRACTION**

Serrated siping pattern enhances biting edges for superior grip and traction.



### **WET AND DRY PERFORMANCE**

Intricate siping and quad-circumferential groove pattern optimizes tire-to-road contact for a variety of seasons.



## SU318 RADIAL H/T

CUV / SUV TOURING  
CUV / SUV



Wheel Diameter	Size	Item Number	Service Index	Sidewall	LR/PR	Tread Depth	Rim Width (Measured)	Rim Width (Approved)	Section Width	Overall Diameter	Max Load	Approximate Weight	UTQG
15"	215/75R15	24745009	100T	BW	SL	11/32	6.00	5.50 - 7.00	8.5	27.7	1764@44	29.7	500AA
	225/70R15	24250004	100T	BW	SL	11/32	6.50	6.00 - 7.50	9.0	27.4	1764@44	29.4	500AA
	225/75R15	24750006	102T	BW	SL	11/32	6.00	6.00 - 7.00	8.8	28.3	1874@44	31.6	500AA
	235/70R15	24252002	103T	BW	SL	12/32	7.00	6.00 - 8.00	9.4	28.0	1930@44	31.0	500AA
	235/75R15	24760011	105T	BW	SL	11/32	6.50	6.00 - 7.00	9.3	28.9	2039@44	33.1	500AA
16"	215/70R16	24156003	100T	BW	SL	11/32	6.50	5.50 - 7.00	8.7	27.9	1764@44	29.0	500AA
	225/70R16	24260003	103T	BW	SL	11/32	6.50	6.00 - 7.00	9.0	28.4	1929@44	31.4	500AA
	225/75R16	24751002	104T	BW	SL	11/32	6.00	6.00 - 7.00	8.8	29.3	1984@44	33.9	500AA
	235/70R16	24265009	106T	BW	SL	11/32	7.00	6.00 - 7.50	9.4	29.0	2094@44	32.9	500AA
	235/75R16	24761001	108T	BW	SL	11/32	6.50	6.00 - 8.00	9.3	29.8	2205@44	34.3	500AA
	245/70R16	24268007	111T	BW	XL	12/32	7.00	6.50 - 7.50	9.8	29.5	2150@51	35.6	500AA
	245/75R16	24768005	111T	BW	SL	12/32	7.00	6.50 - 8.00	9.8	30.5	2403@44	37.5	500AA
	255/65R16	24585003	109T	BW	SL	12/32	7.50	7.00 - 9.00	10.2	29.1	2270@44	38.3	500AA
	255/70R16	24270005	111T	BW	SL	12/32	7.50	6.50 - 8.00	10.2	30.1	2403@44	38.3	500AA
	265/70R16	24272007	112T	BW	SL	12/32	8.00	7.00 - 8.50	10.7	30.6	2469@44	39.6	500AA
265/75R16	24773003	116T	BW	SL	12/32	7.50	7.00 - 8.00	10.5	31.7	2756@44	41.0	500AA	
275/70R16	24274005	114T	BW	SL	12/32	8.00	7.00 - 8.50	11.0	31.2	2601@44	41.3	500AA	
17"	215/60R17	24567004	96H	BW	SL	10/32	6.50	6.00 - 7.50	8.7	27.2	1565@44	26.8	500AA
	215/65R17	24556998	99T	BW	SL	11/32	6.50	6.00 - 7.50	8.7	28.0	1709@44	29.6	500AA
	225/60R17	24685004	99T	BW	SL	11/32	6.50	6.00 - 8.00	9.0	27.6	1709@44	30.8	500AA
	225/65R17	24557019	102V	BW	SL	11/32	6.50	6.00 - 8.00	9.0	28.5	1874@44	31.1	500AA
	235/60R17	24552702	102T	BW	SL	11/32	7.00	6.50 - 8.50	9.4	28.1	1874@44	32.1	500AA
	235/65R17	24657008	104T	BW	SL	11/32	7.00	6.50 - 8.50	9.4	29.1	1984@44	32.5	500AA
	245/65R17	24552508	107T	BW	SL	12/32	7.00	7.00 - 8.00	9.8	29.5	2149@44	34.5	500AA
	245/70R17	24552603	110T	BW	SL	12/32	8.00	6.50 - 8.00	9.8	29.5	2337@44	38.3	500AA
	255/60R17	24607004	110V	BW	XL	12/32	8.50	7.00 - 9.00	10.2	29.1	2337@51	35.9	500AA
	255/65R17	24626004	110H	BW	SL	12/32	8.50	7.00 - 9.00	10.2	30.1	2337@44	38.3	500AA
	255/70R17	24629001	112T	BW	SL	12/32	8.50	6.50 - 8.50	10.2	31.1	2469@44	40.0	500AA
	265/60R17	24370003	108T	BW	SL	12/32	8.00	7.00 - 9.50	10.7	29.5	2205@44	37.0	500AA
	265/65R17	24689005	112T	BW	SL	12/32	8.00	7.50 - 9.50	10.7	30.6	2469@44	40.2	500AA
	265/70R17	24689206	115T	BW	SL	12/32	8.00	7.00 - 8.50	10.7	31.7	2679@44	41.4	500AA
275/60R17	24689303	110T	BW	SL	12/32	8.00	7.50 - 9.50	11.0	30.0	2337@44	39.8	500AA	
275/65R17	24690001	115T	BW	SL	12/32	8.00	7.50 - 9.50	11.0	31.1	2679@44	40.5	500AA	
18"	225/60R18	24496803	100H	BW	SL	11/32	6.50	6.00 - 8.00	9.0	28.6	1764@44	32.2	500AA
	235/55R18	24496702	100V	BW	SL	11/32	7.50	6.50 - 8.50	9.6	28.1	1764@44	32.0	500AA
	235/60R18	24583204	103V	BW	SL	11/32	7.00	6.50 - 8.50	9.4	29.1	1929@44	33.5	500AA
	235/65R18	24658003	106H	BW	SL	11/32	7.00	6.50 - 8.50	9.4	30.0	2094@44	34.9	500AA
	245/60R18	24376004	105T	BW	SL	12/32	7.00	7.00 - 8.50	9.8	29.6	2039@44	35.5	500AA
	255/55R18	24995102	109V	BW	XL	12/32	8.00	7.00 - 9.00	10.4	29.0	2271@51	36.1	500AA
	255/60R18	24609001	112V	BW	XL	12/32	8.50	7.00 - 9.00	10.2	30.0	2469@51	37.1	500AA
	255/65R18	24627003	111T	BW	SL	12/32	7.50	7.00 - 9.00	10.2	31.1	2403@44	37.0	500AA
	255/70R18	24499002	113T	BW	SL	12/32	7.50	6.50 - 8.50	10.2	32.1	2535@36	41.8	500AA
	265/60R18	24583302	114V	BW	XL	12/32	8.00	7.50 - 9.50	10.7	30.5	2337@51	39.6	500AA
	265/65R18	24651002	114T	BW	SL	12/32	8.00	7.50 - 9.50	10.7	31.5	2601@44	41.1	500AA
	◆265/70R18	24890006	116T	BW	SL	12/32	8.00	7.00 - 9.00	10.7	32.6	2756@44	38.9	500AA
	275/65R18	24531004	116T	BW	SL	12/32	8.00	7.50 - 9.00	11.0	32.1	2756@36	42.5	500AA
19"	225/55R19	24988005	99V	BW	SL	11/32	7.00	6.00 - 8.00	9.2	28.8	1709@44	30.6	500AA
	235/50R19	24880502	99V	BW	SL	11/32	7.50	6.50 - 8.50	9.6	28.3	1709@44	31.5	500AA
	P235/55R19	24497004	105V	BW	SL	11/32	7.50	6.50 - 8.50	9.6	29.2	2039@51	31.7	500AA
	P245/55R19	24377003	103V	BW	SL	11/32	7.50	7.00 - 8.50	10.0	29.6	1929@44	34.0	500AA
	255/50R19	24083009	107V	BW	XL	11/32	8.00	7.00 - 9.00	10.4	29.1	1929@51	32.6	500AA
	255/55R19	24502102	111V	BW	XL	11/32	8.00	7.00 - 9.00	10.4	30.0	2403@42	33.8	500AA
	255/60R19	24628002	109H	BW	SL	12/32	7.50	7.00 - 9.00	10.2	31.1	2271@44	36.4	500AA

◆ No rim protector

Continued on next page...

Product images shown are for illustrative purposes only. Technical features, tread pattern design and tire construction subject to change without notice and can vary by size and application.

# SU318 RADIAL H/T

CUV / SUV TOURING · CUV / SUV

Developed for everyday comfort and styling for your CUV and SUV, the **SU318** has a smooth and responsive ride. The innovative M+S design promotes excellent all-season traction, with lateral siping and four circumferential grooves promoting water evacuation to provide excellent grip and handling for confident, year-long performance.

**50K**  
MILE WARRANTY

**T · H · V**  
SPEED RATING

**500AA**  
UTQG

[CLICK HERE TO DOWNLOAD CUTSHEET](#)

## ENHANCED FEATURES



REDUCED NOISE



WET TRACTION



ALL-SEASON



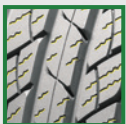
### QUIET AND COMFORTABLE RIDE

Advanced CAD-designed block and siping pattern minimize road noise.



### ENHANCED CORNERING AND HANDLING

Angled shoulder blocks improve grip and directional stability for optimal cornering and handling capabilities.



### OPTIMIZED TRACTION

Serrated siping pattern enhances biting edges for superior grip and traction.



### WET AND DRY PERFORMANCE

Intricate siping and quad-circumferential groove pattern optimizes tire-to-road contact for a variety of seasons.



**SU318 RADIAL H/T**  
**CUV / SUV TOURING**  
 CUV / SUV



SIZES CONTINUED...

Wheel Diameter	Size	Item Number	Service Index	Sidewall	LR/PR	Tread Depth	Rim Width (Measured)	Rim Width (Approved)	Section Width	Overall Diameter	Max Load	Approximate Weight	UTQG
<b>19"</b>	275/45R19	24245111	108V	BW	XL	11/32	9.00	8.50 - 10.50	10.7	28.8	1984@51	32.5	500AA
	235/55R20	24498003	102H	BW	SL	11/32	7.50	6.50 - 8.50	9.6	30.2	1874@44	33.0	500AA
	245/50R20	24374005	102V	BW	SL	11/32	7.50	7.00 - 8.50	10.0	29.7	1874@44	33.8	500AA
	P255/50R20	24502004	109V	BW	SL	11/32	8.00	7.00 - 9.00	10.4	30.1	2271@51	35.9	500AA
	255/55R20	24503202	107H	BW	SL	11/32	8.00	7.00 - 9.00	10.4	31.0	2149@44	35.0	500AA
<b>20"</b>	275/40R20	24084002	106V	BW	XL	11/32	9.50	9.00 - 11.00	10.9	28.7	1874@51	34.6	500AA
	275/45R20	24910007	110V	BW	XL	11/32	9.00	8.50 - 10.50	10.7	29.8	2337@42	34.9	500AA
	275/55R20	24660002	117V	BW	XL	12/32	8.50	7.50 - 9.50	11.2	31.9	2535@51	42.8	500AA
	275/60R20	24466007	115H	BW	SL	12/32	8.00	7.50 - 9.50	11.0	33.0	2679@44	39.8	500AA
	285/50R20	24670003	116V	BW	XL	11/32	9.00	8.00 - 10.00	11.7	31.3	2756@51	38.8	500AA
<b>22"</b>	285/45R22	24459902	114H	BW	XL	11/32	9.50	9.00 - 10.50	11.2	32.1	2601@51	40.0	500AA

Product images shown are for illustrative purposes only. Technical features, tread pattern design and tire construction subject to change without notice and can vary by size and application.

# SL309 RADIAL A/P

A/P · LIGHT TRUCK

The **SL309** is an all-purpose, heavy duty performer for your light truck application. The M+S all-season tread design incorporates open shoulders and circumferential grooves that help dispel water and debris, while lateral-siped tread blocks improve traction performance on paved, gravel, and dirt roads. Robust steel-belted construction provide optimal treadlife along with heavy duty construction for load hauling.

**40K**  
MILE WARRANTY

**Q**  
SPEED RATING

[CLICK HERE TO DOWNLOAD CUTSHEET](#)

## ENHANCED FEATURES



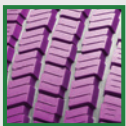
**REDUCED NOISE**



**WET TRACTION**



**DURABILITY**



### OPTIMIZED COMFORTABLE AND QUIET RIDE

Variable pitch tread reduces road noise for a smoother, quieter ride.



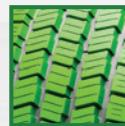
### ENHANCED WET TRACTION

Open shoulder design enhances quicker water evacuation for better wet traction.



### IMPROVED GRIP AND TRACTION

Staggered tread blocks improve grip and traction with an enhanced tire-to-road contact.



### CONFIDENT HANDLING

Circumferential ribs improve highway stability, lateral traction, and steering response.



**SL309 RADIAL A/P**  
A/P  
LIGHT TRUCK



Wheel Diameter	Size	Item Number	Service Index	Sidewall	LR/PR	Tread Depth	Rim Width (Measured)	Rim Width (Approved)	Section Width	Overall Diameter	Max Load (Single)	Max Load (Dual)	Approximate Weight
15"	31X10.50R15LT	22285018	109Q	BW	C/6	12/32	8.50	7.00 - 9.00	10.6	30.5	2270@50	-	43.2
	LT215/75R15	22264004	100/97Q	BW	C/6	11/32	6.00	5.50 - 7.00	8.5	27.7	1765@50	1610@50	33.0
	LT235/75R15	22260023	104/101Q	BW	C/6	11/32	6.50	6.00 - 7.00	9.3	28.9	1985@50	1820@50	37.3
16"	LT215/85R16	22860014	115/112Q	BW	E/10	11/32	6.00	5.50 - 7.00	8.5	30.4	2680@80	2470@80	39.8
	LT225/75R16	22265015	115/112Q	BW	E/10	12/32	6.00	6.00 - 7.00	8.8	30.5	2680@80	2470@80	39.2
	LT235/85R16	22270033	120/116Q	BW	E/10	13/32	6.50	6.00 - 7.50	9.3	31.7	3042@80	2778@80	46.3
	LT245/75R16	22275034	120/116Q	BW	E/10	13/32	7.00	6.50 - 8.00	9.8	30.5	3042@80	2778@80	43.8
	LT265/75R16	22279030	123/120Q	BW	E/10	13/32	7.50	7.00 - 8.00	10.5	31.7	3415@80	3085@80	49.3
	LT285/75R16	22789010	122/119Q	BW	D/8	13/32	8.00	7.50 - 9.00	11.3	32.8	3305@65	3000@65	53.5
17"	LT235/80R17	22275603	120/117Q	BW	E/10	14/32	6.50	6.00 - 7.50	9.3	31.8	3085@80	2835@80	46.7
	LT245/70R17	22269015	119/116Q	BW	E/10	16/32	7.00	6.50 - 8.00	9.8	30.6	3000@80	2755@80	49.2
	LT245/75R17	22275503	121/118Q	BW	E/10	14/32	7.00	6.50 - 7.50	9.8	31.5	3195@80	2910@80	46.9
	LT265/70R17	22810023	123/120Q	BW	E/10	15/32	8.00	7.00 - 8.50	10.7	31.7	3415@80	3085@80	53.4
	LT285/70R17	22688006	121/118Q	BW	D/8	14/32	8.50	7.50 - 9.00	11.5	32.8	3195@65	2910@65	54.4
18"	LT275/65R18	22687002	123/120Q	BW	E/10	14/32	8.00	7.50 - 9.00	11.0	32.1	3415@80	3085@80	52.0

Product images shown are for illustrative purposes only. Technical features, tread pattern design and tire construction subject to change without notice and can vary by size and application.

# SL369 RADIAL A/T

A/T · LIGHT TRUCK

The tough SL369 All-Terrain is designed to tackle off-road and rocky conditions, head-on. Wide, deep grooves with switchback tread blocks provide optimal off-road traction during inclement conditions, while the tread pattern allows for a quiet and comfortable on-road drive. The SL369 is the go-to tire that offers a great balance of both on and off-road truck performance.

**40K**  
MILE WARRANTY

**Q · R · S · T**  
SPEED RATING

**500AA**  
UTQG\*

\*UTQG for non-LT sizing only.

[CLICK HERE TO DOWNLOAD CUTSHEET](#)

## ENHANCED FEATURES



**OFF-ROAD**



**WET TRACTION**

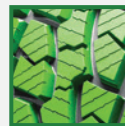


**DURABILITY**



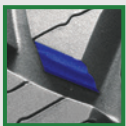
### WHITE NOISE PRODUCTION

Variable pitch tread integrated with unique siping patterns reduce road harmonics.



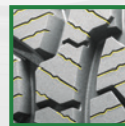
### RESPONSIVE BRAKING AND GRIP

Improved siping pattern and rigid tread blocks enhance braking response.



### OPTIMIZED ON AND OFF-ROAD TRACTION

Aggressive tread block designed for maximum on and off-road traction.



### IMPROVED WET AND DRY TRACTION

Angled siping pattern improves wet traction by providing extra grip on wet surfaces while edged shoulder blocks enhanced dry traction.





## SL369 RADIAL A/T A/T LIGHT TRUCK

# WEST LAKE TIRES®

Wheel Diameter	Size	Item Number	Service Index	Sidewall	LR/PR	Tread Depth	Rim Width (Measured)	Rim Width (Approved)	Section Width	Overall Diameter	Max Load (Single)	Max Load (Dual)	Approximate Weight	UTQG
15"	31X10.50R15LT	22285019	109Q	BW	C/6	16/32	8.50	7.00 - 9.00	10.6	30.5	2270@50	-	46.7	-
	LT235/75R15	22870001	104/101Q	BW	C/6	14/32	6.50	6.00 - 7.00	9.3	28.9	1985@50	1820@50	39.2	-
	235/75R15	24760013	109S	BW	XL	12/32	6.50	6.00 - 7.00	9.3	28.9	2271@51	-	34.1	500AA
16"	215/70R16	24156005	100S	BW	SL	12/32	6.50	5.50 - 7.00	8.7	27.9	1764@44	-	28.9	500AA
	LT215/85R16	22860015	115/112Q	BW	E/10	14/32	6.00	5.50 - 7.00	8.5	30.4	2680@80	2470@80	42.8	-
	225/70R16	24260006	103S	BW	SL	12/32	6.50	6.00 - 7.00	9.0	28.4	1929@44	-	32.3	500AA
	LT225/75R16	22112001	115/112Q	BW	E/10	14/32	6.00	6.00 - 7.00	8.8	29.3	2680@80	2470@80	42.5	-
	225/75R16	24751003	108S	BW	XL	12/32	6.00	6.00 - 7.00	8.8	29.3	2205@51	-	34.2	500AA
	P235/70R16	24265013	106S	BW	SL	12/32	7.00	6.00 - 7.50	9.4	29.0	2094@36	-	34.5	500AA
	235/75R16	24761002	112S	BW	XL	12/32	6.50	6.00 - 8.00	9.3	29.8	2469@51	-	34.5	500AA
	LT235/85R16	22270034	120/116Q	BW	E/10	16/32	6.50	6.00 - 7.50	9.3	31.7	3042@80	2778@80	49.1	-
	245/70R16	24268009	111S	BW	XL	13/32	7.00	6.50 - 7.50	9.8	29.5	2403@51	-	38.0	500AA
	LT245/75R16	22275035	120/116Q	BW	E/10	16/32	7.00	6.50 - 8.00	9.8	30.5	3042@80	2778@80	48.6	-
	245/75R16	24768007	111S	BW	SL	13/32	7.00	6.50 - 8.00	9.8	30.5	2403@44	-	39.5	500AA
	255/70R16	24270009	111T	BW	SL	13/32	7.50	6.50 - 8.00	10.2	30.1	2403@36	-	40.2	500AA
	265/70R16	24272009	112S	BW	SL	13/32	8.00	7.00 - 8.50	10.7	30.6	2469@44	-	41.6	500AA
	LT265/75R16	22279031	123/120Q	BW	E/10	15/32	7.50	7.00 - 8.00	10.5	31.7	3415@80	3085@80	51.6	-
	265/75R16	24773005	116S	BW	SL	13/32	7.50	7.00 - 8.00	10.5	31.7	2756@44	-	43.8	500AA
	275/70R16	24274006	114S	BW	SL	13/32	8.00	7.00 - 8.50	11.0	31.2	2601@44	-	44.1	500AA
	LT285/75R16	22789019	126/123Q	BW	E/10	16/32	8.00	7.50 - 9.00	11.3	32.8	3750@80	3415@80	58.9	-
LT305/70R16	22800004	124/121R	BW	E/10	16/32	9.00	8.00 - 9.50	12.2	32.8	3525@65	3195@65	59.9	-	
LT315/75R16	22790004	127/124R	BW	E/10	16/32	8.50	8.00 - 11.00	12.3	34.6	3858@65	3527@65	63.3	-	
17"	35X12.50R17LT	22229002	121Q	BW	E/10	16/32	10.00	8.50 - 11.00	12.5	34.5	3197@65	-	64.6	-
	235/65R17	24657010	104S	BW	SL	12/32	7.00	6.50 - 8.50	9.4	29.1	1984@44	-	34.3	500AA
	235/75R17	22021000	109T	BW	SL	12/32	6.50	6.00 - 8.00	9.3	30.9	2271@44	-	35.2	500AA
	LT235/80R17	22275604	120/117Q	BW	E/10	16/32	6.50	6.00 - 7.50	9.3	31.8	3085@80	2835@80	49.1	-
	245/65R17	24552510	107S	BW	SL	13/32	7.00	7.00 - 8.00	9.8	29.5	2150@44	-	38.1	500AA
	LT245/70R17	22269005	119/116Q	BW	E/10	16/32	7.00	6.50 - 8.00	9.8	30.6	3000@80	2755@80	48.6	-
	245/70R17	24552608	110T	BW	SL	13/32	7.00	6.50 - 8.00	9.8	30.6	2337@36	-	39.4	500AA
	LT245/75R17	22275504	121/118Q	BW	E/10	16/32	7.00	6.50 - 7.50	9.8	31.5	3195@80	2910@80	48.1	-
	▶ 255/70R17	24629002	112T	BW	SL	13/32	7.50	6.50 - 8.50	10.2	31.1	2469@44	-	39.7	500AA
	255/75R17	22130003	115T	BW	SL	13/32	7.00	6.50 - 8.50	10.0	32.0	2679@44	-	41.5	500AA
	265/65R17	24689008	112S	BW	SL	13/32	8.00	7.50 - 9.50	10.7	30.6	2469@44	-	41.6	500AA
	P265/70R17	24689211	115T	BW	SL	13/32	8.00	7.00 - 8.50	10.7	31.7	2679@44	-	43.6	500AA
	LT265/70R17	22810004	121/118Q	BW	E/10	16/32	8.00	7.00 - 8.50	10.7	31.7	3195@80	2910@80	53.3	-
LT285/70R17	22688013	121/118Q	BW	E/10	16/32	8.50	7.50 - 9.00	11.5	32.8	3195@80	2910@80	55.7	-	
285/70R17	24695001	117T	BW	SL	13/32	8.50	7.50 - 9.00	11.5	32.8	2833@36	-	47.5	500AA	
LT315/70R17	22801001	121/118R	BW	E/10	16/32	9.50	8.00 - 11.00	12.7	34.4	3197@65	2910@65	66.1	-	
18"	▶ 265/60R18	24583309	110T	BW	SL	13/32	8.00	7.50 - 9.50	10.7	30.5	2337@44	-	40.6	500AA
	▶ 265/65R18	24651006	114T	BW	SL	13/32	8.00	7.50 - 9.50	10.7	31.5	2601@44	-	42.6	500AA
	LT265/70R18	22815005	124/121R	BW	E/10	16/32	8.00	7.00 - 9.00	10.7	32.6	3525@80	3195@80	58.4	-
	LT275/65R18	22687003	123/120Q	BW	E/10	16/32	8.00	7.50 - 9.00	11.0	32.1	3415@80	3085@80	54.9	-
	275/65R18	24531005	116T	BW	SL	12/32	8.00	7.50 - 9.00	11.0	32.1	2756@36	-	43.7	500AA
	LT275/70R18	22797007	125/122S	BW	E/10	16/32	8.00	7.00 - 9.00	11.0	33.2	3640@80	3305@80	56.4	-
	LT285/65R18	22402002	125/122R	BW	E/10	16/32	8.50	8.00 - 10.00	11.8	33.1	3640@80	3305@80	61.3	-
20"	▶ 275/55R20	24660005	113S	BW	SL	12/32	8.50	8.00 - 9.50	11.2	31.9	2535@36	-	41.6	500AA
	275/60R20	24466004	115T	BW	SL	12/32	8.00	8.00 - 9.50	11.0	33.0	2679@36	-	43.4	500AA
	LT275/65R20	22689305	126/123S	BW	E/10	16/32	8.00	8.00 - 9.50	11.0	34.1	3748@80	3417@80	58.6	-
	LT285/55R20	22401507	122/119R	BW	E/10	16/32	9.00	8.00 - 10.00	11.7	32.4	3305@80	3000@80	63.3	-
	LT305/55R20	22789701	121/118R	BW	E/10	16/32	9.50	8.50 - 11.00	12.4	33.2	3197@65	2910@65	66.2	-

### ▶ Features rim protector

Product images shown are for illustrative purposes only. Technical features, tread pattern design and tire construction subject to change without notice and can vary by size and application.

# SL376 RADIAL M/T

M/T · LIGHT TRUCK

Designed with high off-road capability without sacrificing on-road manners, the SL376 is prepared for your next off-road adventure. The rugged and rigid tread block design offers excellent off-road traction while the optimized void ratio is engineered to navigate all types of road conditions. Additionally, the tread blocks feature step-down supports that enhance stability and traction, while the rigid, offset shoulder blocks allow for superior traction in mud, rugged terrain, and snowy road conditions. The aggressive upper sidewall offers protection from sharp rocks while providing additional off-road traction, and the integrated stone ejectors further deter stone retention and drilling. The SL376 is an off-road tire ready to take conquer any terrain.



[CLICK HERE TO DOWNLOAD CUTSHEET](#)

## ENHANCED FEATURES



**OFF-ROAD**



**WET TRACTION**

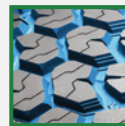


**DURABILITY**



### RUGGED & RIGID TREAD BLOCKS

Delivers excellent off-road traction without sacrificing on-road performance.



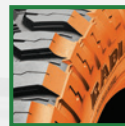
### OPTIMAL VOID RATIO

Engineered to effectively navigate through all types of road condition.



### STEP-DOWN SUPPORT

Enhance stability and handling while providing protection against stone drilling.



### AGGRESSIVE UPPER SIDEWALL

Greater protection from sharp rocks and provide additional off-road traction.



**SL376 RADIAL M/T**  
M/T  
LIGHT TRUCK



Wheel Diameter	Size	Item Number	Service Index	Sidewall	LR/PR	Tread Depth	Rim Width (Measured)	Rim Width (Approved)	Section Width	Overall Diameter	Max Load (Single)	Max Load (Dual)	Approximate Weight
<b>15"</b>	30X9.50R15LT	22280011	104Q	BW	C/6	19/32	7.50	6.50 - 8.50	9.4	29.5	1985@50	-	42.4
	31X10.50R15LT	22285034	109Q	BW	C/6	19/32	8.50	7.00 - 9.00	10.6	30.7	2270@50	-	48.1
	32X11.50R15LT	22232004	113Q	BW	C/6	19/32	9.00	7.50 - 10.00	11.4	31.5	2535@50	-	51.9
	33X12.50R15LT	22228005	108Q	BW	C/6	19/32	10.00	8.00 - 10.50	12.5	32.5	2205@35	-	59.2
	35X12.50R15LT	22228504	113Q	BW	C/6	19/32	10.00	8.00 - 10.50	12.5	34.5	2535@35	-	63.4
	LT235/75R15	22270511	104/101Q	BW	C/6	19/32	6.50	6.00 - 8.00	9.3	29.1	1985@50	1820@50	42.1
<b>16"</b>	LT235/85R16	22270054	120/116Q	BW	E/10	19/32	6.50	6.00 - 7.50	9.3	31.7	3042@80	2778@80	46.8
	LT245/75R16	22275055	120/116Q	BW	E/10	19/32	7.00	6.50 - 8.00	9.8	30.5	3042@80	2778@80	47.3
	LT265/75R16	22279051	123/120Q	BW	E/10	19/32	7.50	7.00 - 8.00	10.5	31.9	3415@80	3085@80	54.1
	LT285/75R16	22789026	126/123Q	BW	E/10	19/32	8.00	7.50 - 9.00	11.3	33.1	3750@80	3415@80	58.9
	LT315/75R16	22790009	127/124R	BW	E/10	19/32	8.50	8.00 - 11.00	12.3	34.6	3860@65	3525@65	63.4
<b>17"</b>	35X12.50R17LT	22229007	121Q	BW	E/10	19/32	10.00	8.50 - 11.00	12.5	34.5	3195@65	-	66.4
	LT235/80R17	22275612	120/117Q	BW	E/10	19/32	6.50	6.00 - 7.50	9.3	31.8	3085@80	2835@80	47.7
	LT255/75R17	22130005	111/108Q	BW	C/6	19/32	7.00	6.50 - 8.50	10.0	32.0	2405@50	2205@50	47.4
	LT265/70R17	22810021	121/118Q	BW	E/10	19/32	8.00	7.00 - 9.00	10.7	31.9	3195@80	2910@80	55.4
	LT285/70R17	22688018	121/118Q	BW	E/10	19/32	8.50	7.50 - 9.50	11.5	32.8	3195@80	2910@80	57.6
<b>18"</b>	35X12.50R18LT	22229256	123Q	BW	E/10	19/32	10.00	8.50 - 11.00	12.5	34.8	3415@65	-	67.6
	LT275/65R18	22772510	123/120Q	BW	E/10	19/32	8.00	8.00 - 9.50	11.0	32.1	3415@80	3085@80	60.3
	LT275/70R18	22797013	125/122Q	BW	E/10	19/32	8.00	7.00 - 9.00	11.0	33.2	3640@80	3305@80	62.5
<b>20"</b>	35X12.50R20LT	22229508	121Q	BW	E/10	19/32	10.00	8.50 - 11.00	12.5	34.5	3195@65	-	68.2
	LT275/65R20	22689314	126/123Q	BW	E/10	19/32	8.00	8.00 - 9.50	11.0	34.3	3415@80	3750@80	65.2
	LT305/55R20	22789709	125/122Q	BW	F/12	19/32	9.50	9.00 - 11.00	12.4	33.5	3305@80	3640@80	69.2
<b>22"</b>	35X12.50R22LT	22229702	117Q	BW	E/10	19/32	10.00	8.50 - 11.00	12.5	34.8	2835@65	-	74.1
	37X13.50R22LT	22371302	123Q	BW	E/10	19/32	11.00	9.50 - 12.00	13.6	36.5	3415@65	-	83.7
<b>24"</b>	40X15.50R24LT	22455800	128Q	BW	E/10	19/32	12.50	11.00 - 14.00	15.6	39.8	3970@65	-	98.7
<b>26"</b>	40X15.50R26LT	22480200	126Q	BW	E/10	19/32	12.50	11.00 - 14.00	15.6	39.5	3750@65	-	102.4

Product images shown are for illustrative purposes only. Technical features, tread pattern design and tire construction subject to change without notice and can vary by size and application.

## STANDARD LIMITED WARRANTY

Every tire, tube and wheel supplied by Tireco is warranted to be free from defects in materials and workmanship subject to the terms, conditions, and limitations as stated below. If our examination of a warrantable product determines that the product has failed due to a defect in materials or workmanship, we will make a reasonable allowance toward the purchase of a new product at current prices or other adjustment within our discretion. Adjustments will be made on a pro-rata basis determined by the amount of usage or service received by the product and will be based on the most recent purchase price (proof of purchase is required).

### TERMS, CONDITIONS, AND LIMITATIONS

Any product, no matter how well constructed, may fail in service or become unserviceable due to conditions beyond the control of the manufacturer. Under no circumstance is this Standard Limited Warranty a representation that a tire, tube or wheel failure cannot occur.

### WHAT IS COVERED:

This Standard Limited Warranty is only applicable to products sold in and used on vehicles registered & operated in the United States, U.S. Territories, Canada, and Mexico. In addition, this Standard Limited Warranty is applicable only to the original purchaser of the product, and is not transferable. The costs of mounting, balancing, and other associated services as well as any applicable Federal, State or Local taxes are not covered by this Standard Limited Warranty.

### WHAT IS NOT COVERED:

This Standard Limited Warranty does not cover and Tireco will not adjust any of our products against road hazards, including, but not limited to: cuts, punctures (whether repairable or not), snags, bruises, tears, impact breaks, etc. Products are also not warranted if damaged due to misuse, including, but not limited to, improper installation or mounting, misapplication, improper repair, overloading, improper inflation, excessive speed, racing, spinning, drifting, unintended off-road use, stone drilling, improper use of chains, use of non-approved or non-standard rims (as determined by the Tire and Rim Association), continued operation while severely under-inflated, misalignment or imbalance of wheels/rims, defective brakes or shock absorbers, abuse, accident or collision, willful damage, oil or chemical action, improper storage, fire or other excessive heat, vandalism, and water or other material entrapped inside the product.

### SPECIFIC TIRE LIMITATIONS AND EXCLUSIONS

- Tire adjustments will be based on the remaining tread depth. Tires worn to 2/32" tread depth or to the treadwear indicator bars are deemed to have served their full useful tread life and are not adjustable for any reason.
- Tires returned for out-of-round or ride disturbance conditions within the first 2/32" of treadwear will be credited for 100% of their value based on the average purchase price for the last six months. Tires returned for out of round beyond the first 2/32 of wear will not be considered for adjustment. Off-road, Agriculture, and Trailer tires are not eligible for out-of-round or ride disturbance consideration.
- Tires that have been branded to note special classifications such as "B" (blemished) may not be considered for adjustment at Tireco's sole discretion.
- Tires marked with an "NA" (nonadjustable) are specifically excluded from this Standard Limited Warranty.
- For tires designed for and used on all classes of recreational vehicles, equipment trailers, horse trailers, cargo trailers and all other trailers; Tireco may require a certified weight ticket for any warranty consideration. Specialty Trailer tires are specifically limited to a warranty of four (4) years from date of manufacture and any allowance made will be based on our Manufacturer's Suggested Retail Price (MSRP).
- Loss of time, or use, inconvenience, or any incidental or consequential damage.
- Tires which have been retreaded (other than those specifically mentioned in our Limited Casing Warranty) or altered in any way are not warranted.
- Tires that do not have a Department of Transportation (DOT) number; tires that fail due to the addition of aftermarket materials (tire fill, sealant, balancer, etc.); tires that have been modified by notching, buffing or cutting; tires returned for weather/ozone cracking after two (2) years from date of purchase; tires with production dates six (6) years and older.

### SPECIFIC TUBE LIMITATIONS AND EXCLUSIONS

- Tube adjustments will be considered on a case by case basis and must be claimed within the first 30 days after installation or one year from the date of purchase, whichever comes first.

### SPECIFIC WHEEL LIMITATIONS AND EXCLUSIONS

- Cosmetic defects caused by weathering as well as used, reconditioned or blemished wheels are specifically excluded from this Standard Limited Warranty.
- Chrome plating and clear coat finishes are warranted against peeling, cracking, and other cosmetic flaws for a period of one (1) year from date of purchase.
- New wheels returned without all of the original packaging material in good condition including the original box will be charged a 15% restocking fee.

### HOW TO GET SERVICE:

Each step of the following procedure must be completed in order to qualify for any credit provided by this Standard Limited Warranty:

1. The dealer must contact the Tireco Consumer Relations Department to receive a Return Merchandise Number (RMA) to start the warranty claim process.
  - a. [rma@tireco.com](mailto:rma@tireco.com)
  - b. 1-800-937-9433
2. The dealer must use the Warranty Claim Form provided by Tireco for any adjustments to be considered for credit. The Claim Form must be filled in completely (Tire size, Tread pattern, DOT, Remaining tread, etc).
3. The Consumer Relations Representative will request tire(s) to be sent to one of Tireco's Adjustment Centers at our expense for inspection. Shipping instructions along with an RMA number will be provided.
4. The dealer must send the completed Claim Form and all other documents to the Adjustment Center.
5. Upon receipt of documents and tires, the appropriate Tireco Representative will complete the inspection.
6. If the tire(s) is adjustable, the dealer will be notified and will be issued a credit after which the tire will be destroyed by Tireco.
7. If the tire(s) is not adjustable and does not meet the limited Standard Warranty requirements, the dealer will receive a letter of notification with an explanation. If the tire(s) was requested by the dealer to be returned, the non adjustable tire(s) will be returned at the expense of the dealer. Any tire that the dealer leaves with Tireco will be destroyed without further notice.
8. No credit shall be given until a completed warranty claim form and all documents related to the claim are received by Tireco and the tire is found to be adjustable.
9. Any form that is illegible or incomplete may be returned to the dealer for completion and will delay the application process.
10. For any questions or if you need assistance in filling out the forms, please call Tireco consumer relations department 1-800-937-9433 or email us at [rma@tireco.com](mailto:rma@tireco.com).

### PLEASE NOTE:

All tires/wheels returned to Tireco for warranty consideration are subject to inspection. Tires/wheels that are found to not meet the warranty criteria (adjustable) will be disposed of at the time of inspection unless the tires/wheels have been previously requested to be returned. All tires/wheels returned to the dealer/customer will be done at the dealer's/customer's expense.

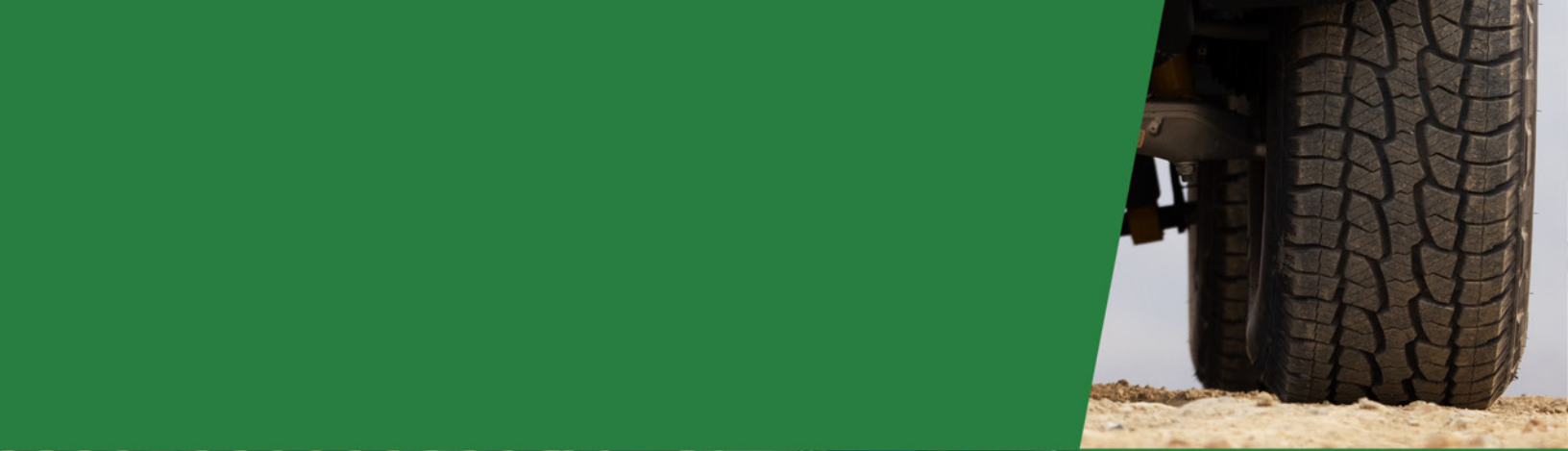
### TO ASK QUESTIONS, REQUEST INFORMATION OR FILE A CLAIM:

Contact our warranty professionals at 1-800-937-9433 or via email at [rma@tireco.com](mailto:rma@tireco.com). No claim will be considered unless submitted in accordance with our standard claim procedures. Claim forms and all warranty related forms can be found on our website [www.tireco.com](http://www.tireco.com). All product returns must be accompanied by a completed Return Material Authorization (RMA) form and number. Products submitted without prior authorization will not be processed and are subject to freight chargeback.

### YOUR RIGHTS UNDER STATE LAW:

All implied warranties, including any warranty of merchantability or fitness for a particular purpose, are expressly limited to the duration of this Standard Limited Warranty. All obligations or liabilities for indirect, incidental or consequential damages are hereby excluded to the extent permitted by law, including economic loss, loss of profit, loss of use of vehicle, loss of time, inconvenience, personal injury or death. Some states/provinces do not allow limitations on how long an implied warranty lasts, or the exclusion or limitation of incidental or consequential damages, so the above limitation or exclusions may not apply. This Standard Limited Warranty gives the customer legal rights that may vary from state/province to state/province. This Standard Limited Warranty, the Standard Limited Mileage Warranty, and the Limited Casing Warranty are the only express warranties applicable to items sold by Tireco, and supersede the terms of any previous warranty.





**CUSTOMER SERVICE**  
TOLL FREE  
800.227.8925

**ONLINE SERVICES**  
[www.tireco.com](http://www.tireco.com)  
[sales@tireco.com](mailto:sales@tireco.com)

**TELEPHONE**  
310.767.7990

**FAX**  
310.217.9267



500 W. 190<sup>TH</sup> STREET, SUITE 600  
GARDENA, CA 90248

